

Economic development driven by Geospatial data – Register of investment locations for local and regional authorities

Center of Geospatial Information Management
Nemanja Paunić
nemanja.paunic@rgz.gov.rs

My Background



Member of the Centre of Geospatial Information Management in charge for Technical component and MIG-T member of Republic of Serbia.

Main working tasks are related to the development of Serbian National geoportals Geosrbija, National Digital platform, and provision of geospatial data through OGC and REST services, geospatial modelling, development, and standardization.

Engaged in project IMPULS and „Improvement of Investment Environment in Serbia“.

MSc in Geoinformatics. Before raising Geosrbija and got job position "ask him about" and "this is a priority" he loved paintball and table tennis. Mr. Darko Vučetić always Nemanja's birthplace Badovinci from some unknown reason pronounced wrong as Šabac.


What we are talking about?

- The idea
- Register of investment locations – Origins
- Project „Improvement of Investment Environment in Serbia“
- National Investment Map Model
- System for Data Collection
- Capacity Building of Local-Governments and RGA
- Location Pool
- Public Monitoring and Visibility Tool

Register of investment locations – Origins

2017

- Republic of Serbia made a first attempt to create investment maps for two municipalities: city settlement Vladičin Han and the city of Kikinda.
- Spatial data for brownfield, greenfield and greyfield locations in these municipalities was provided and published on the digital platform Geosrbija.
- The initiative had positive reactions from stakeholders, but implementation and the standardization of the model were a new challenge.

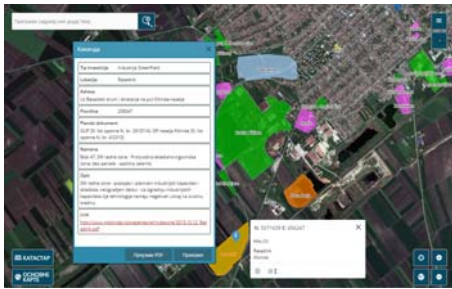


Location ID	Location Name	Location Type	Area (sqm)	Investment Status	Investment Type	Investment Date	Investment Value (EUR)	Investment Description	Investment Contact	Investment Status	Investment Date	Investment Value (EUR)	Investment Description	Investment Contact
1	Vladičin Han	Brownfield	10000	Investment	Industrial	2017	1000000	Investment in industrial facility	Investment Contact	Investment Status	Investment Date	Investment Value (EUR)	Investment Description	Investment Contact
2	Vladičin Han	Greenfield	20000	Investment	Commercial	2017	2000000	Investment in commercial building	Investment Contact	Investment Status	Investment Date	Investment Value (EUR)	Investment Description	Investment Contact
3	Vladičin Han	Greyfield	15000	Investment	Industrial	2017	1500000	Investment in industrial facility	Investment Contact	Investment Status	Investment Date	Investment Value (EUR)	Investment Description	Investment Contact

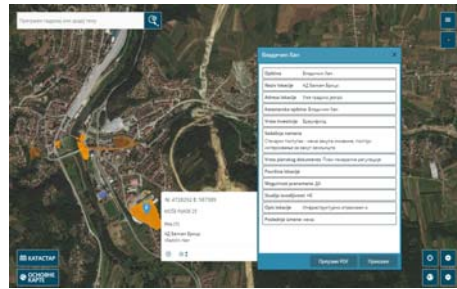
Vladičin Han - data

Register of investment locations – Origins

2017



Kikinda - data



Vladačin Han - data

Register of investment locations – Origins

2018

- Lessons learned from the two original data sets (Kikinda and Vladačin Han)
- Establishment of one single model (beta version)
- A beta test for inexpensive and relatively easy technology (Creating, Maintenance, Update and Delete) - RGA provided a solution through the Digital Platform of the NSDI
- Lessons learned – writing the Project proposal



Digital platform as a tool for maintenance of the register
<https://a3.geosrbija.rs>

„Improvement of Investment Environment in Serbia“

December 2018 – June 2021

Purpose and Scope of the Project

The project aims to support the RGA and Serbia in establishment of the National Register of Investment Maps (NRIM). Furthermore, the project aims to support the RGA in establishment of a long-term sustainable cooperation with local government administrations (municipalities) and other public administrations responsible for spatial data.

The project expected outcome has been set as follows: “Establishment of a National Register of Investment Maps (NRIM)” for creation, maintenance and monitoring of investment locations for the territory of the Republic of Serbia with a platform for stakeholder communication and decision-making.

The project has been divided into five main components based on the core parts of the NRIM: **National Investment Map Model, System for Data Collection, Capacity Building of Local-Governments and RGA, Location Pool, Public Monitoring and Visibility Tool** and a component for management and administration of the project, i.e. Project Management.



РЕПУБЛИЧКИ ГЕОДЕТСКИ ЗАВОД

LANTMÄTERIET



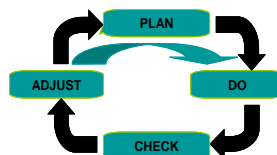
„Improvement of Investment Environment in Serbia“

Approach and steps 2018 – June 2021

- 10 Units of local self-government
- Initial system filling
- Modular development
- Filling the registry (10 Units of local self-government)
- System maintenance

2021 -

- Transfer to all USG (National Coverage)
- Modular development
- System maintenance



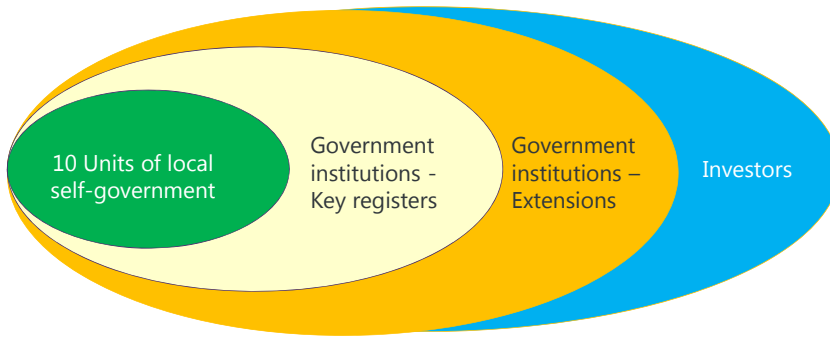
РЕПУБЛИЧКИ ГЕОДЕТСКИ ЗАВОД

LANTMÄTERIET



„Improvement of Investment Environment in Serbia“

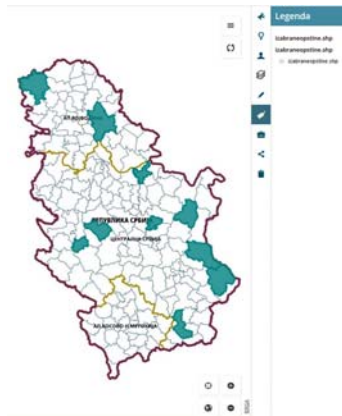
Approach and steps 2018 – June 2021



„Improvement of Investment Environment in Serbia“

Selected Municipalities:

- Zrenjanin
- Vranje
- Sombor
- Požarevac
- Pirot
- Knjaževac
- Ćuprija
- Čačak
- Bor
- Arilje

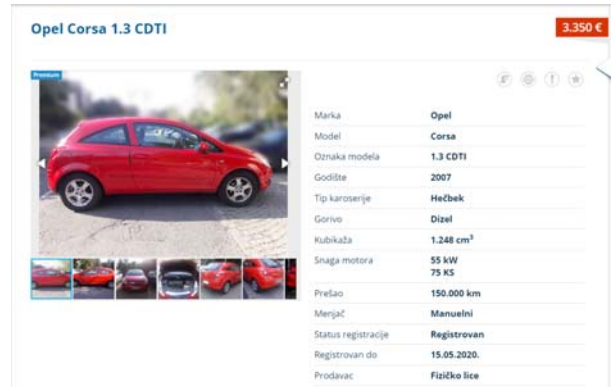


„Improvement of Investment Environment in Serbia“

Last but not least...

Good,
Well preserved,
Slightly crossed,
Grandmother drove him
to the market and back.

Disclaimer: Dear Conference, this is just a joke.
Good Šapčanin would never miss this opportunity.
This is a photo of the random ad and does not aim at any promotion or sale.
....
But, if you need a good car I have a good friend. :)



Questions?



Center of Geospatial Information Management
Nemanja Paunić
nemanja.paunic@rgz.gov.rs

„Improvement of Investment Environment in Serbia“
projekat.info@rgz.gov.rs

Thank you for your attention and have a nice lunch!

Center of Geospatial Information Management
Nemanja Paunić
nemanja.paunic@rgz.gov.rs